

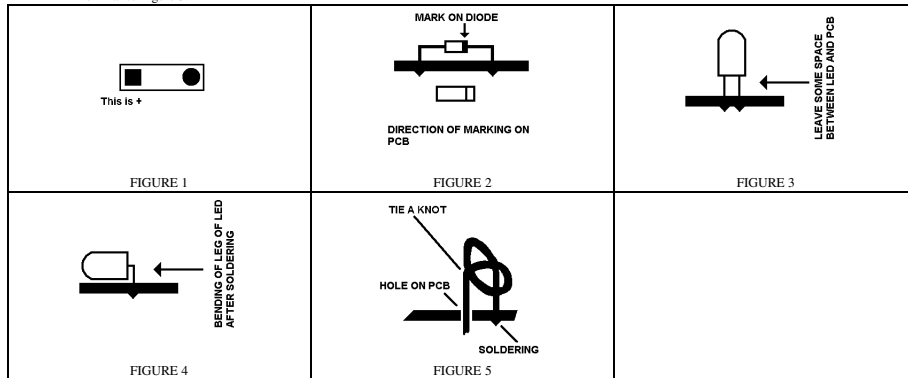
LED ELECTRIC TORCH

PRODUCT CODE: M00270016

DESCRIPTION: This is a LED Electric Torch with two sets of LED and three sets of switch control

READ BEFORE INSTALLATION:

- Put the component on the side of screen printing and solder on the back of PCB without printing.
- Placing direction of component.
- 1. On component, longer leg is "+".
- 2. On PCB marking, square pad as Figure 1 is always "+".
- 3. For diode, please install as Figure 2.
- Do not put the LED to very bottom, just install as Figure 3.
- For 9V Battery Adaptor, Red is B+ and Black is B-. Also, please tie a knot after the red and black wire has passed the neighbors hole before soldering. This is similar to Figure 5.

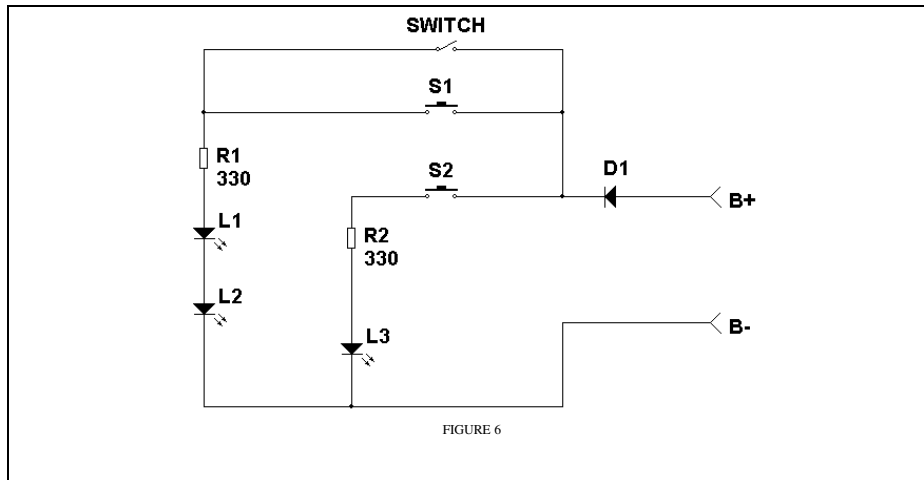


CIRCUIT EXPLANATION:

Please read the below together with the circuit diagram in Figure 6.

- The function of D1 is to prevent reverse power supply.
- When SWITCH is on, the current would pass from B+, D1, SWITCH, R1, L1 and L2, and then back to B-. L1 and L2 are on.
- When S1 is on, the current would pass from B+, D1, S1, R1, L1 and L2, and then back to B-. L1 and L2 are on.
- When S2 is on, the current would pass from B+, D1, S2, R2, L3, and then back to B-. L3 is on.

CIRCUIT DIAGRAM:



INSTALLATION:

Just install the component to the PCB M00260032 according to below table.

ITEM	SYMBOL ON PCB	DESCRIPTION	OUTLOOK	DIRECTION IS IMPORTANT?
1	R1	RESISTOR, 330ohms	ORANGE, ORANGE BROWN	NO
2	R2	RESISTOR, 330ohms	ORANGE, ORANGE BROWN	NO
3	D1	DIODE, IN4001	FIGURE 2	FIGURE 2
4	SWITCH	SLIDE SWITCH	SIX LEGS	NO
5	S1	PUSH BUTTON SWITCH	FOUR LEGS	NO
6	S2	PUSH BUTTON SWITCH	FOUR LEGS	NO
7	L1	LED	TRANSPARENT,	YES
8	L2	LED	TRANSPARENT	YES
9	L3	LED	RED	YES
10	B+, B-	9V BATTERY ADAPTOR	RED WIRE, BLACK WIRE	YES

- Bend the legs of LED as Figure 4 so that the LED is pointing to front when light on.